



**D.C. DEPARTMENT OF GENERAL SERVICES**

**REQUEST FOR QUALIFICATIONS**

**CALL TO ARTIST**

October 8, 2013

**Proposal Due Date:** **October 30, 2013 by 2:00 p.m. EST**

**Proposal Delivery Location:** *Department of General Services  
Att'n: JW Lanum  
Frank D. Reeves Center  
2000 14<sup>th</sup> Street, NW  
Contracts & Procurement Division, 8<sup>th</sup> Floor  
Washington, DC 20009*

**Contact:** Kim Gray  
Department of General Services  
2000 14<sup>th</sup> Street, NW  
8<sup>th</sup> Floor  
Washington, D.C. 20009  
[kim.gray@dc.gov](mailto:kim.gray@dc.gov)  
Phone: (202) 724-4121

**Solicitation Number:** **DCAM-14-NC-0079**

## Opportunity

The Department of General Services (“Department” or “DGS”) is issuing this Request for Qualifications (RFQ) to engage individual artists and artistic teams (Artist) to respond to this Call to Artists with professional qualifications in addition to a proposal of site-specific artistic capital improvements for the new Ballou High School, located at 3401 4th Street, S.E., Washington, DC 20032 in the Congress Heights Community of Ward 8. The Artists shall develop a new original permanent work of art made specifically for the site that reflects the history of the Congress Heights Community, Washington, D.C. and Ballou Senior High School.

There are two (2) selection processes:

- Request for Qualifications (RFQ), whereby an Artist and/or Team submits images of prior work public art projects demonstrating five years of site –specific public art experience.

**APPLICATION DEADLINE OCTOBER 30, 2013  
SEMI---FINALISTS ANNOUNCED DECEMBER 2013**

The finalist will be selected through an Art Selection Committee selection process. This will be a commission for a new original permanent work of art made specifically for the site.

- Conduct semi-finalists site visits and community input session(s). Submittal of a site specific design proposal

**SITE SPECIFIC DESIGN PROPOSAL DEADLINE JANUARY 15, 2014**

Site Specific Proposals shall include or consider the following:

- Fabricated from durable, low-maintenance material that can withstand the elements and requires minimal maintenance.
- Incorporate context of the Ward 8 community, with sensitivity to the history, traditions and iconography that uplift the pride of the community.
- Adhere to requisite ADA and safety regulations.
- Engaging and enjoyable to individuals of all ages and backgrounds.

## **Community Context**

### **About Ballou Senior High School:**

Ballou High School was founded in the early 1960s to serve residents in the southern part of [Anacostia](#), including [Congress Heights](#), [Washington Highlands](#), and [Bellevue](#). The school was named for Dr. Frank Washington Ballou, superintendent of the DC public schools from 1920 to 1943. The new Ballou High will be a signature \$140 million flag school for the District of Columbia.

### **VISION**

Developing and graduating globally competitive students for college, careers and leadership

### **MISSION**

Facilitate high-quality instruction, provide a safe and effective learning environment and offer a continuum of student and family support services

### **PHILOSOPHY**

The philosophy of Ballou High School embodies the belief that all children can learn and benefit from an intensive academic program delivered within the context of a nurturing and structured school environment.

Ballou provides each student with a wide-range of opportunities and challenging experiences to expand his/her world, vast academic and extra-curricular activities to increase his/her knowledge, and leadership opportunities that will equip him/her to take an active role in society.

Ballou High School offers a balanced curriculum in the humanities and sciences based on clearly articulated academic standards. Mathematics, Science, English, Technology and Social Studies are the backbone of our student's education and enhance the study of other subject areas, by providing a broad context in which to better understand them. The curriculum is geared to prepare each student for success on the secondary level.

### **Additional Resources:**

District of Columbia Public Schools Ballou Senior High School Profile:

<http://profiles.dcps.dc.gov/452>

Ballou STAY Profile:

<http://profiles.dcps.dc.gov/Ballou+STAY+High+School>

### **Communities that Ballou Senior High School Serves:**

- Anacostia: <http://en.wikipedia.org/wiki/Anacostia>
- Congress Heights: [http://en.wikipedia.org/wiki/Congress\\_Heights](http://en.wikipedia.org/wiki/Congress_Heights)
- Washington Highlands:  
[http://en.wikipedia.org/wiki/Washington\\_Highlands,\\_Washington,\\_D.C.](http://en.wikipedia.org/wiki/Washington_Highlands,_Washington,_D.C.)
- Bellevue: [http://en.wikipedia.org/wiki/Bellevue\\_\(Washington,\\_D.C.\)](http://en.wikipedia.org/wiki/Bellevue_(Washington,_D.C.))

## **About DC Department of General Services:**

The Department of General Services (DGS) has a mission to elevate the quality of life for the District with superior construction, first-rate maintenance and expert real estate management. By building and maintaining safe and green state-of-the-art facilities which foster economic growth and elevate educational environments, our trusted and skillful employees create modern and vibrant communities across all of the District of Columbia.

The Department of General Services (DGS), a newly established District agency, provides cost-effective, centralized facility management services. In October of 2011, the agency assumed the functions and responsibilities of the Department of Real Estate Services (DRES), Office of Public Education Facilities Modernization (OPEFM), Municipal Facilities: Non-Capital agency, and the capital construction and real property management functions of several other District agencies.

DGS improves the efficiencies of basic services, while removing redundancies, to provide the most cost-effective management and ensure the best value of the District's property acquisition, construction and maintenance resources.

The Department of General Services:

- Manages the capital improvement and construction program for District government facilities;
- Acquires real property, by purchase or lease, for use by the District government;
- Manages space in buildings and adjacent areas operated and leased by the District government;
- Provides building services for facilities owned and occupied by the District government, including engineering services, custodial services, security services, energy conservation, utilities management, maintenance, inspection and planning, repairs and non-structural improvements; and
- Disposes of District real and personal property through sales, leases or other authorized methods.

## **Eligibility**

The competition is open nationally to professional artists with five years of site-specific and/or public art experience; however preference will be given to artists certified by the Department of Small and Local Business Development. Artists should have demonstrated experience working with community representatives, youth, businesses and government entities. It is also important that if the artist(s) selected for the project are not already very familiar with the Ward 8 they should be willing to actively engage and collaborate with local residents.

## **Selection Criteria & Process**

The selection committee, representing diverse interests and expertise, will review images submitted by artists and recommend between (3) three to (5) five Semi-Finalists for each project. Each Semi-Finalist will be awarded a \$500 honorarium to create a site-specific design proposal that would include a scale model or rendering, an itemized budget, a project timeline, and a project narrative. Semi-Finalists must be available to attend a site visit and community meeting(s) in October 2013.

After the site-visit and community meeting(s), the semi-finalist must present their proposals at a community Open House. This will give the broader Ward 8 community a chance to view the proposals and hear the artist's intent. After the Open House session, semi-finalists will present their work to the selection committee. The selection committee will review the designs and recommend (1) one finalist/team for the project.

The following Public Art Evaluation Criteria will be used for the Finalist:

### **Artistic Content**

80 %

- The applicant's work sample and support materials (brochures, articles, letters of support, etc.) demonstrate high standards of artistic excellence within the chosen discipline(s);
- Artist(s) and/or applicant's written concept exhibits high quality, innovation and creativity
- Applicant has experience with site specific public art projects and uses personnel with demonstrated arts expertise (such as arts administrator, professional artists) to plan and implement artistic content;
- The described project, goals and schedule of planned activities are feasible;
- The applicant demonstrates a commitment to hiring DC-based artists, where applicable, to deliver artistic content (such as arts administrators, professional artists); and
- Artist(s) and/or applicant demonstrate the ability to translate artistic discipline to project participants.

### **Community Engagement and Impact**

5 %

- Project provides shared learning opportunities in the District that facilitate a greater participation in the arts, relative to the artistic discipline
- Applicant demonstrates sensitivity to the cultural, ethnic and economic background of the participants and the residents of the District of Columbia
- Project addresses significant diversity of expression;
- Project addresses needs of the community;
- Project location(s) and presentation(s) are accessible to persons with disabilities; and
- Applicant has substantive experience working with community representatives, landscape architects, business and government entities

## Capacity and Sustainability

### 10 %

- The applicant is sufficiently stable, in terms of arts expertise, organizational capacity, and financial status to implement the proposed project;
- The applicant demonstrates the internal capacity to administer the project and has appropriate financial monitoring systems in place to track expenditures
- The applicant's budget information is detailed, accurate, feasible, and directly related to the project. All items are eligible expenses;
- The applicant has experience in producing similar public art projects; and

## Level of Participation

### 5 %

- Applicant demonstrates effective outreach to project participants;
- Applicant involves District residents (artist(s), active participants, audience) and community in the planning of project activities.

The design proposal and the selection committee's recommendations will be forwarded to the DGS for review and final approval. The artist whose design is approved will then enter into an agreement with DGS for final design, fabrication and installation of the artwork.

## Requirements

- Artist is to protect all finishes adjacent to the artwork installation location as well as any finishes which will be traversed (IE: floors, slabs, door thresholds, elevators, etc...) to transport the artwork to its final location.
- Artist is to ensure that all parts of any work installed on floors not accessible from the ground are able to fit into an elevator and will not exceed the weight capacity of same.
- Artist to include the cost of the erection and removal of any scaffolds needed to complete its work as well as all cost to repair any damage caused to any installed or finished work of other trades which is damaged during the art installation.
- Artist is to coordinate all work with the Construction Manager at least 2 weeks prior to commencing installation.
- Artist is to ensure that all employees which will be onsite are able to pass a background screening and are able to work on school grounds.
- Artist is to clean up all debris as a result of its work onsite on a daily basis. All debris is to be taken to a dumpster provided by the Construction Manager at the end of each work day.

## Project Goals, Themes, & Budget (SEE ATTCHMENT B)

This Call for Artists seeks multiple art for multiple spaces throughout the school and school grounds. Please be very specific (referring to Artist number) as which piece(s) of art you are responding to.

The total budget for each project is listed in Attachment B of the RFQ.

The indicated budget must include all artists' fees and costs associated with design,

fabrication, and travel, transportation of work to the site, insurance, permits, installation and documentation of the artwork.

## Calendar and Timeline

<b>Project Timeline</b>	
Call/RFQ Released:	<b>10/8/13</b>
RFQ pre-proposal conference	<b>10/16/13</b>
Question submission deadline	<b>10/18/13</b>
Responses to questions issued	<b>10/23/13</b>
Submission Deadline for RFQ:	<b>10/30/13</b>
First Round Panel Review	<b>November</b>
Semi-finalists Notified and Announced:	<b>December</b>
Site Visit Tour and Community Meeting with Semi-Finalists:	<b>December</b>
Site-Specific Proposals Due:	<b>1/15/14</b>
Proposal Presentation:	<b>Between 1/16/14-1/24/14</b>
Finalist Announced:	<b>February</b>
Contract Executed:	<b>February</b>
Final Design, Fabrication and Installation Begins:	<b>March – July</b>
Installation Complete deadline:	<b>8/15/14</b>

## Submission Requirements

(Design proposals are NOT accepted at this stage.)

- Complete **Application Form. Attachment A**
- One Page **Letter of Intent** stating your interest in and qualifications for the project. Describe in detail the approach to engage the community. Within the letter, outline your past working with the community.
- Up to **10 Digital** images of previous artwork. Images should be numbered to correspond with the **Image Identification List**. Example: 01\_Jones; 02\_Jones. Digital images should be submitted on a CD-R or Zip Drive. Do not embed images into PowerPoint or submit moving image or audio files. Images submitted in any other format than jpgs will be disqualified.
- Current artistic **Resume** highlighting experience with site-specific work and public art commissions.
- **Self-Addressed Stamped Envelope** with sufficient postage and large enough to accommodate you slides and protection for your slides if you would like them returned.
- Please make a copy of the application to keep for your records.

## Questions

E-mail no later than Friday, October 18, 2013 by 3:00pm

Contact Kim Gray at  
[kim.gray@dc.gov](mailto:kim.gray@dc.gov) or  
(202) 724-4121 phone

MAIL OR DELIVER ENTRIES TO:

D.C. Department of General Services  
Att'n: JW Lanum  
2000 14<sup>th</sup> Street, NW 8<sup>th</sup> Floor  
Washington, D.C. 20009  
Phone: (202) 724-4121



**ATTACHMENT A**

**APPLICATION FORM**

Ballou High School Art Project DEADLINE DATE:

Wednesday, October 30, 2013

Name \_\_\_\_\_

Address \_\_\_\_\_

City \_\_\_\_\_ State \_\_\_\_\_ Zip \_\_\_\_\_

Daytime Phone \_\_\_\_\_ Email \_\_\_\_\_

I have reviewed Attachment #1 and I am applying to be Artist #: (circle up to three)

#1    #2    #3    #4    #5    #6    #7    #8    #9    #10 \_\_\_\_\_

**IMAGE IDENTIFICATION LIST**

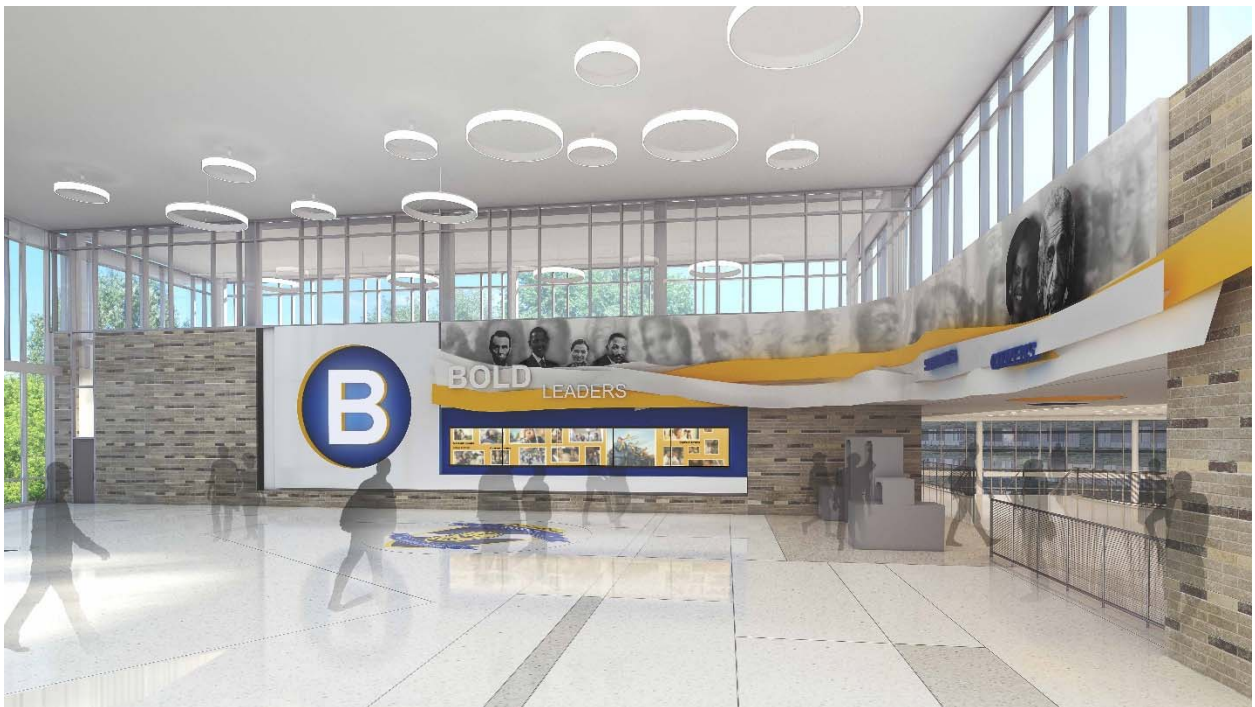
1. \_\_\_\_\_  
Title      Materials                  Dimensions      Year/Location      Budget/Price
2. \_\_\_\_\_  
Title      Materials                  Dimensions      Year/Location      Budget/Price
3. \_\_\_\_\_  
Title      Materials                  Dimensions      Year/Location      Budget/Price
4. \_\_\_\_\_  
Title      Materials                  Dimensions      Year/Location      Budget/Price
5. \_\_\_\_\_  
Title      Materials                  Dimensions      Year/Location      Budget/Price
6. \_\_\_\_\_  
Title      Materials                  Dimensions      Year/Location      Budget/Price
7. \_\_\_\_\_  
Title      Materials                  Dimensions      Year/Location      Budget/Price
8. \_\_\_\_\_  
Title      Materials                  Dimensions      Year/Location      Budget/Price
9. \_\_\_\_\_  
Title      Materials                  Dimensions      Year/Location      Budget/Price
10. \_\_\_\_\_  
Title      Materials                  Dimensions      Year/Location      Budget/Price

**Artist #1** will be responsible for Mural # 1

**Mural #1**



Blank canvas outlined in red above



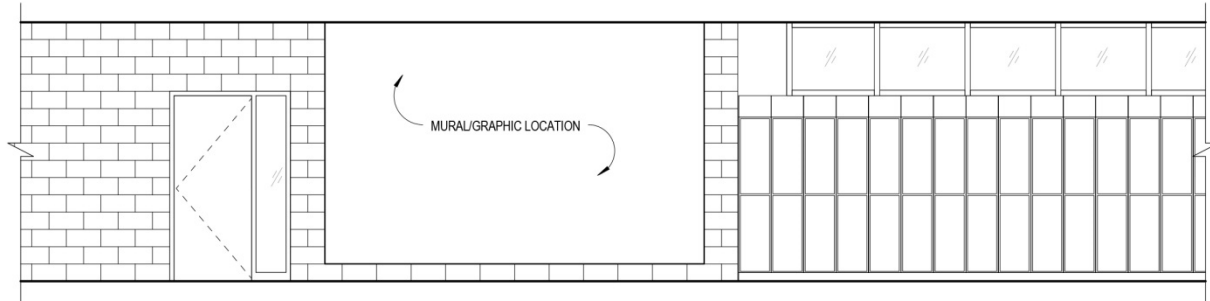
Example of how to incorporate figures and text.

Environmental Conditions	Indoor – temperature range 66-76
Theme	<p>“Leaders of Tomorrow”</p> <p>The mural at the main entry is arguably the most important of all the murals. It is what almost everyone that enters the school will see upon entering. The mural should incorporate the school motto of “BOLD, COURAGEOUS, OUTSTANDING”. There should be a strong three dimensional character for the text, either extruded or installed in front of the mural. The motto asks students to be “Bold Leaders, Courageous Citizens, and Outstanding Scholars”. Internal illumination of the mural in a creative way is preferred. It shall display a gender and racially diverse group of historical figures as high school aged people and inspire students by connecting them to historical figures. The mural shall conform to the curvature of the mural canvas. It shall be a permanent installation</p>
Construction limitations	Paint or lightweight metals only. A level 4 gypsum wallboard finish will be provided. If plywood backing or electrical needs are requested for this mural, all costs including additional circuits, etc.. are included in the budget for this mural.
Depth	
Art style	Representational
Dimensions	8’4”H x 74’5”W
Budget	\$50,000

## The Academic Murals – Group A

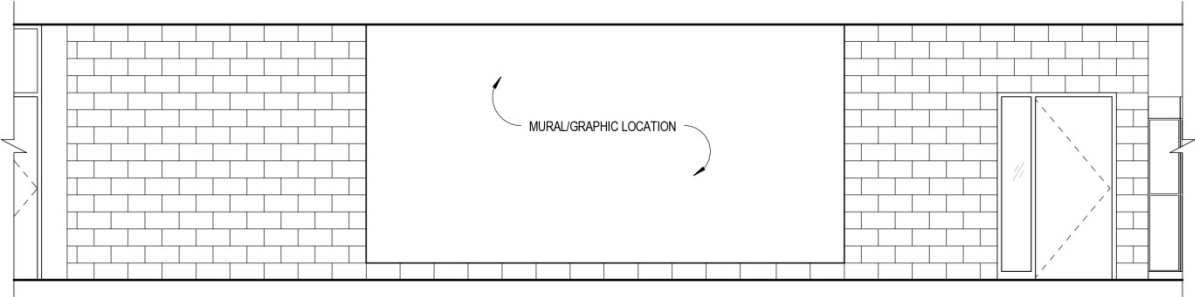
**Artist #2** will be responsible for Murals #2, #3, #4, #11, #12, and #13

### Mural # 2 – South Academic Entrance Wall – 1<sup>st</sup> floor, Area A



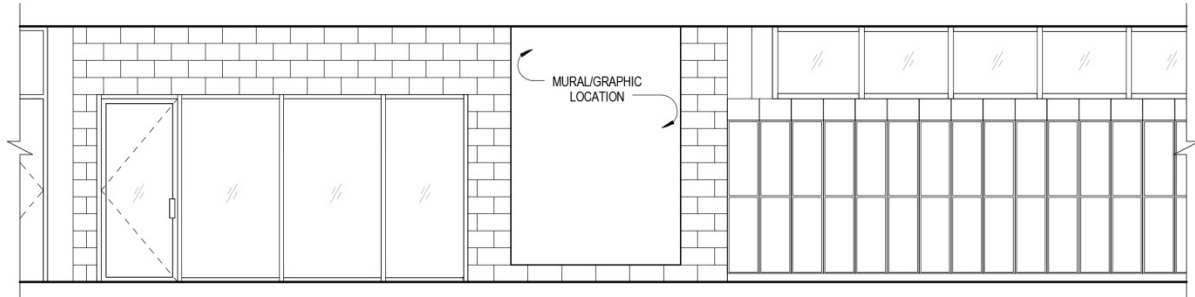
Environmental Conditions	Indoor – temperature range 66-76
Theme	<p>“The Power of Numbers”</p> <p>Dedicated to mathematics, this mural should celebrate all aspects of high school level math. The art shall be two dimensional, display a vibrancy of color and have strong compositional and graphic value. The art of these murals shall incorporate quotes that are thematically connected to the content. The Academic murals must be stylistically related to one another.</p>
Construction limitations	<p>Finished gypsum wall board will be provided. Painting, mixed media, mosaic tile, tapestry or digital techniques with a film application such as vinyl are all accepted.</p>
Depth	Must be less than 1”
Art style	Abstract
Dimensions	14’8” W x 9’4” H
Budget	\$7,500

### Mural #3 – South Academic Entrance Wall – 2<sup>nd</sup> Floor, Area A



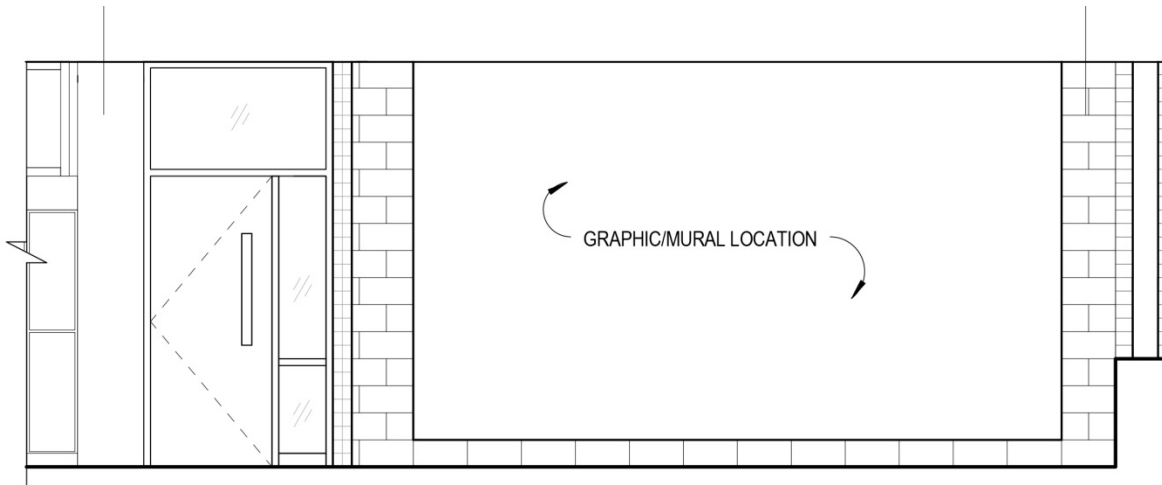
Environmental Conditions	Indoor – temperature range 66-76
Theme	<p>“The Power of Words”</p> <p>Dedicated to English / Literature, this mural should celebrate all aspects of high school level English. The art shall be two dimensional, display a vibrancy of color and have strong compositional and graphic value. The art of these murals shall incorporate quotes that are thematically connected to the content. The Academic murals must be stylistically related to one another.</p>
Construction limitations	<p>Finished gypsum wall board will be provided. Painting, mixed media, mosaic tile, tapestry or digital techniques with a film application such as vinyl are all accepted.</p>
Depth	Must be less than 1”
Art style	Abstract
Dimensions	18’9” W x 9’4” H
Budget	\$7,500

## Mural #4 – South Academic Entrance Wall – 3<sup>rd</sup> Floor, Area A



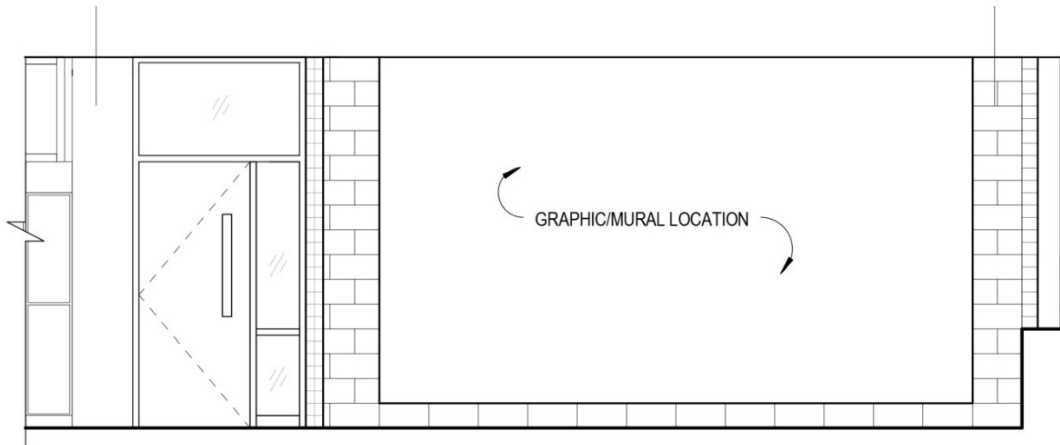
Environmental Conditions	Indoor – temperature range 66-76
Theme	<p>“The Power of Place”</p> <p>Dedicated to Washington, DC history, this mural should celebrate all aspects of the power of the Nation’s Capital. The art shall be two dimensional, display a vibrancy of color and have strong compositional and graphic value. The art of these murals shall incorporate quotes that are thematically connected to the content. The Academic murals must be stylistically related to one another.</p>
Construction limitations	<p>Finished gypsum wall board will be provided. Painting, mixed media, mosaic tile, tapestry or digital techniques with a film application such as vinyl are all accepted.</p>
Depth	Must be less than 1”
Art style	Abstract
Dimensions	6’8” W x 9’4” H
Budget	\$7,500

## Mural #11 – North Academic Entrance Wall – 1<sup>st</sup> Floor, Area B



Environmental Conditions	Indoor – temperature range 66-76
Theme	<p>“The Power of the Past”</p> <p>Dedicated to World history, this mural should celebrate historical events from the past that impact the world around us today. The art shall be two dimensional, display a vibrancy of color and have strong compositional and graphic value. The art of these murals shall incorporate quotes that are thematically connected to the content. The Academic murals must be stylistically related to one another.</p>
Construction limitations	<p>Finished gypsum wall board will be provided. Painting, mixed media, mosaic tile, tapestry or digital techniques with a film application such as vinyl are all accepted.</p>
Depth	Must be less than 1”
Art style	Abstract
Dimensions	16’ W x 9’4”H
Budget	\$7,500

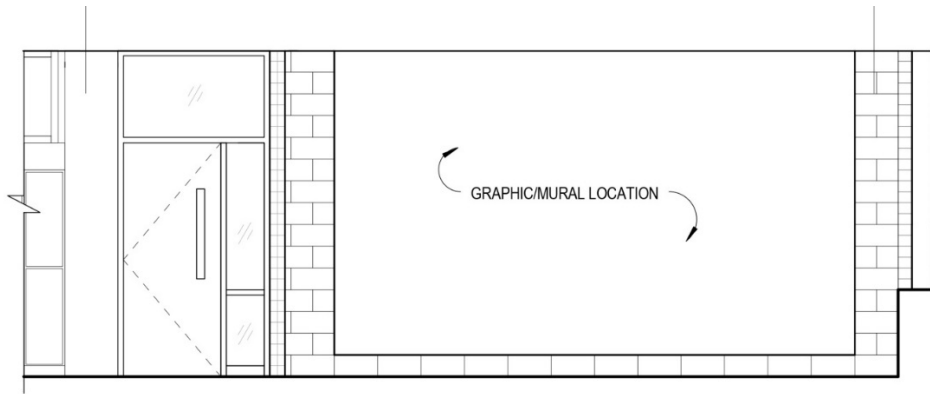
## Mural #12 – North Academic Entrance Wall - 2<sup>nd</sup> Floor, Area B



Environmental Conditions	Indoor – temperature range 66-76
Theme	<p>“The Power of Technology”</p> <p>Dedicated to advanced future technologies of the future such as advanced building techniques, robotics, tech-enhanced humans, brain / computer interfaces. The art shall be two dimensional, display a vibrancy of color and have strong compositional and graphic value. The art of these murals shall incorporate quotes that are thematically connected to the content. The Academic murals must be stylistically related to one another.</p>
Construction limitations	<p>Finished gypsum wall board will be provided.</p> <p>Painting, mixed media, mosaic tile, tapestry or digital techniques with a film application such as vinyl are all accepted.</p>
Depth	Must be less than 1”
Art style	Abstract
Dimensions	16’ W x 9’4”H
Budget	\$7,500



## Mural #13 - North Academic Entrance Wall - 3<sup>rd</sup> Floor, Area B



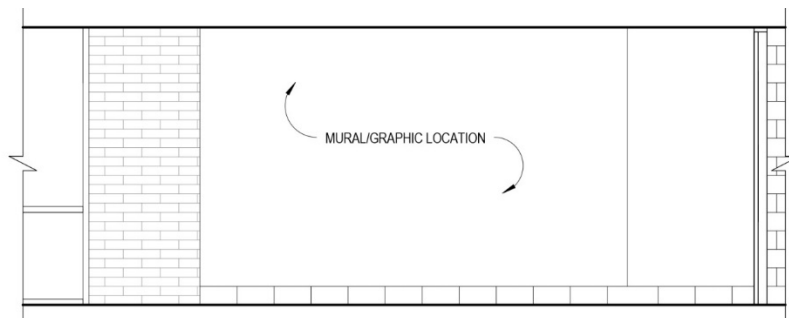
Environmental Conditions	Indoor – temperature range 66-76
Theme	<p>“The Power of Giving”</p> <p>Dedicated to community service, this mural should celebrate all aspects of giving back to those who are less fortunate. The art shall be two dimensional, display a vibrancy of color and have strong compositional and graphic value. The art of these murals shall incorporate quotes that are thematically connected to the content. The Academic murals must be stylistically related to one another.</p>
Construction limitations	<p>Finished gypsum wall board will be provided. Painting, mixed media, mosaic tile, tapestry or digital techniques with a film application such as vinyl are all accepted.</p>
Depth	Must be less than 1”
Art style	Abstract
Dimensions	16’ W x 9’4”H
Budget	\$7,500

## The Academic Murals at Academy Entrances – Group B

**Artist #3** will be responsible for Murals #5, #6, #7, #8, #9, and #10

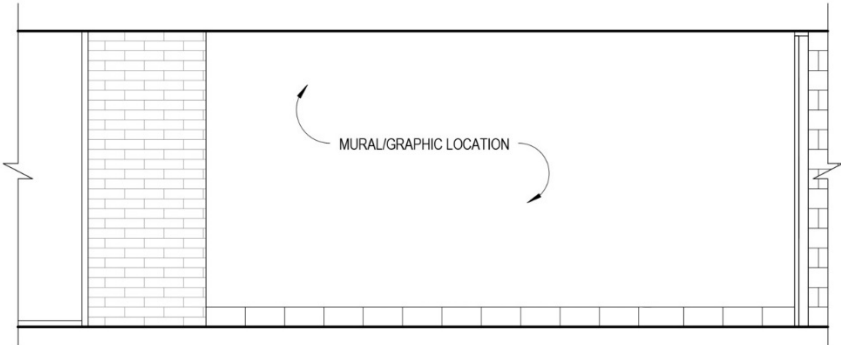


### Mural #5 - Academic Entrance Corridor - 1st Floor, Area A



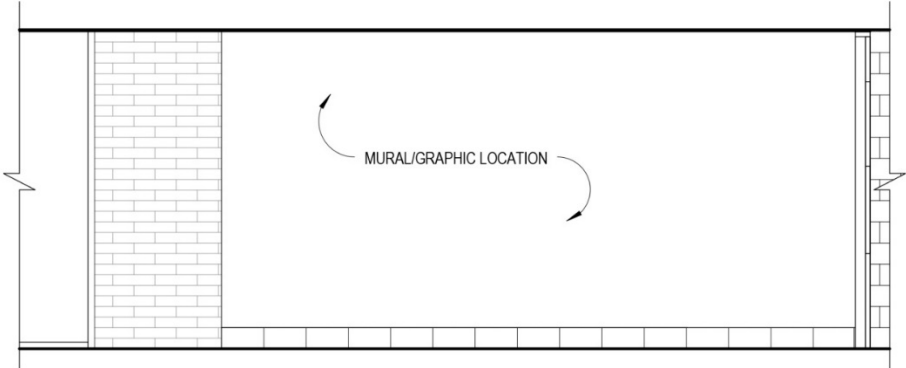
Environmental Conditions	Indoor – temperature range 66-76
Theme	“The Power of Life” Dedicated to biology, zoology and nature. The art shall be two dimensional, display a vibrancy of color and have strong compositional and graphic value. The art of these murals shall incorporate quotes that are thematically connected to the content. The Academic murals must be stylistically related to one another.
Construction limitations	Finished gypsum wall board will be provided. Painting, mixed media, mosaic tile, tapestry or digital techniques with a film application such as vinyl are all accepted.
Depth	Must be less than 1”
Art style	Abstract
Dimensions	15’4”W x 9’4” H
Budget	\$7,500

**Mural #6 - Academic Entrance Corridor- South Wall 2<sup>nd</sup> Floor Area A**



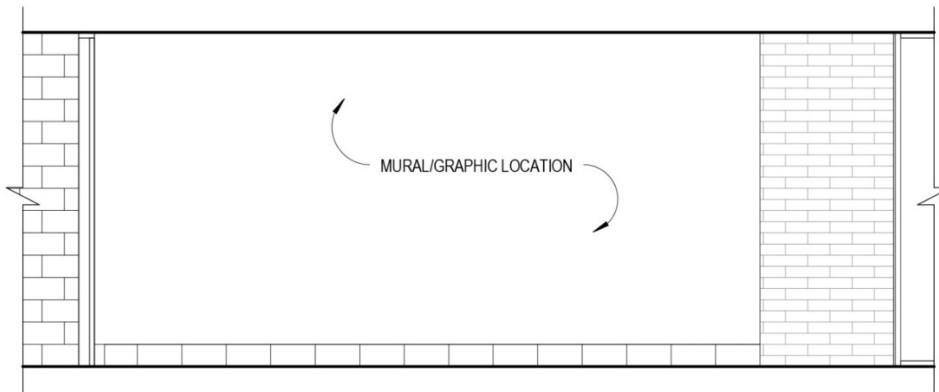
Environmental Conditions	Indoor – temperature range 66-76
Theme	<p>“The Power of Thought”</p> <p>Dedicated to Philosophy, the art should celebrate the great thinkers of all time. The art shall be two dimensional, display a vibrancy of color and have strong compositional and graphic value. The art of these murals shall incorporate quotes that are thematically connected to the content. The Academic murals must be stylistically related to one another.</p>
Construction limitations	<p>Finished gypsum wall board will be provided. Painting, mixed media, mosaic tile, tapestry or digital techniques with a film application such as vinyl are all accepted.</p>
Depth	Must be less than 1”
Art style	Abstract
Dimensions	15’4”W x 9’4”H
Budget	\$7,500

**Mural #7 – Academic Entrance Corridor South Wall – 3<sup>rd</sup> Floor, Area A**



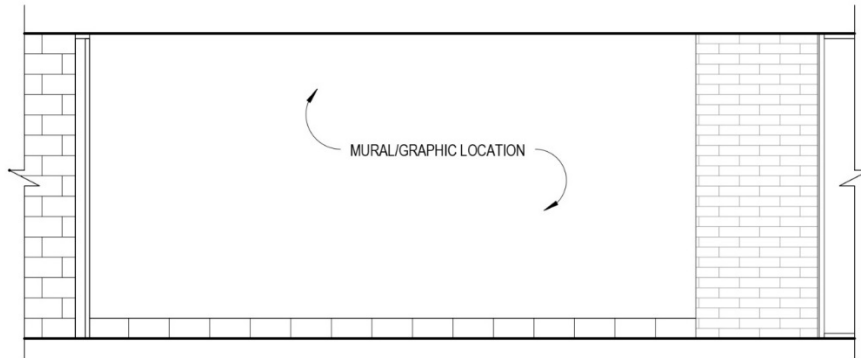
Environmental Conditions	Indoor – temperature range 66-76
Theme	<p>“The Power of Diversity”</p> <p>Dedicated to global cultures, the art should celebrate the globalization of society and the diversity around the globe. The art shall be two dimensional, display a vibrancy of color and have strong compositional and graphic value. The art of these murals shall incorporate quotes that are thematically connected to the content. The Academic murals must be stylistically related to one another.</p>
Construction limitations	<p>Finished gypsum wall board will be provided. Painting, mixed media, mosaic tile, tapestry or digital techniques with a film application such as vinyl are all accepted.</p>
Depth	Must be less than 1”
Art style	Abstract
Dimensions	15’4” W x 9’4” H
Budget	\$7,500

## Mural #8 - Academic Entrance Corridor – North Wall - 1<sup>st</sup> Floor, Area A



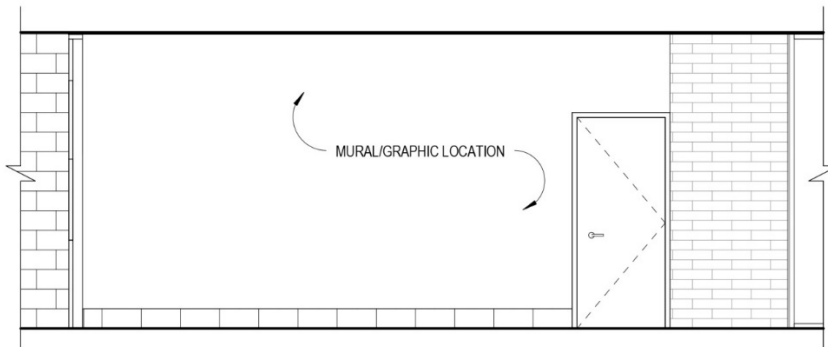
Environmental Conditions	Indoor – temperature range 66-76
Theme	<p>“The Power of Understanding”</p> <p>Dedicated to Foreign Languages, the art should celebrate the need to effectively communicate with others. The art shall be two dimensional, display a vibrancy of color and have strong compositional and graphic value. The art of these murals shall incorporate quotes that are thematically connected to the content. The Academic murals must be stylistically related to one another.</p>
Construction limitations	<p>Finished gypsum wall board will be provided.</p> <p>Painting, mixed media, mosaic tile, tapestry or digital techniques with a film application such as vinyl are all accepted.</p>
Depth	Must be less than 1”
Art style	
Dimensions	20’W X 9’4” H
Budget	\$7,500

## Mural #9 - Academic Entrance Corridor – North Wall - 2<sup>nd</sup> Floor, Area A



Environmental Conditions	Indoor – temperature range 66-76
Theme	<p>“The Power of Science”</p> <p>Dedicated to Chemistry and Physics, the art should celebrate the physical sciences and empirical knowledge. The art shall be two dimensional, display a vibrancy of color and have strong compositional and graphic value. The art of these murals shall incorporate quotes that are thematically connected to the content. The Academic murals must be stylistically related to one another.</p>
Construction limitations	<p>Finished gypsum wall board will be provided.</p> <p>Painting, mixed media, mosaic tile, tapestry or digital techniques with a film application such as vinyl are all accepted.</p>
Depth	Must be less than 1”
Art style	Abstract
Dimensions	20’W x 9’4” H
Budget	\$7,500

## Mural #10 - Academic Entrance Corridor North Wall, 3<sup>rd</sup> Floor Area A



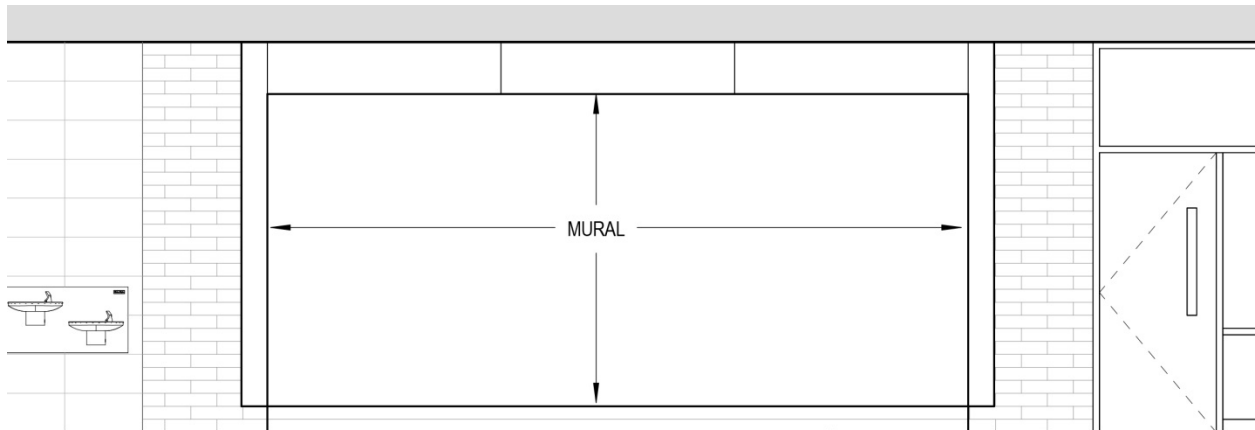
Environmental Conditions	Indoor – temperature range 66-76
Theme	<p>“The Stewardship of the Planet”</p> <p>Dedicated to recycling and sustainability issues, the art should celebrate the need to protect the environment. The art shall be two dimensional, display a vibrancy of color and have strong compositional and graphic value. The art of these murals shall incorporate quotes that are thematically connected to the content. The Academic murals must be stylistically related to one another.</p>
Construction limitations	<p>Finished gypsum wall board will be provided.</p> <p>Painting, mixed media, mosaic tile, tapestry or digital techniques with a film application such as vinyl are all accepted.</p>
Depth	Must be less than 1”
Art style	Abstract
Dimensions	16’8” W x 9’4” H
Budget	\$7,500

**Murals #14, #15, and #16 are deleted from the project.**

## Ballou Pride murals

**Artist #4** will be responsible for Murals #17 & #19

### Mural #17 – Second Floor Entry, Cafeteria



Environmental Conditions	Indoor – temperature range 66-76
Theme	<p>“Ballou Pride”</p> <p>Must incorporate the school mascot, the Knights, primary colors for this mural must be Blue and Gold (pantone colors will be made available), and the phrase “Bold, Courageous, &amp; Outstanding” must be incorporated into the mural.</p>
Construction limitations	<p>Finished gypsum wall board will be provided.</p> <p>Painting, mixed media, mosaic tile, tapestry or digital techniques with a film application such as vinyl are all accepted.</p>
Depth	Must be less than 1”
Art style	
Dimensions	18’ W x 8’ H
Budget	\$7,500



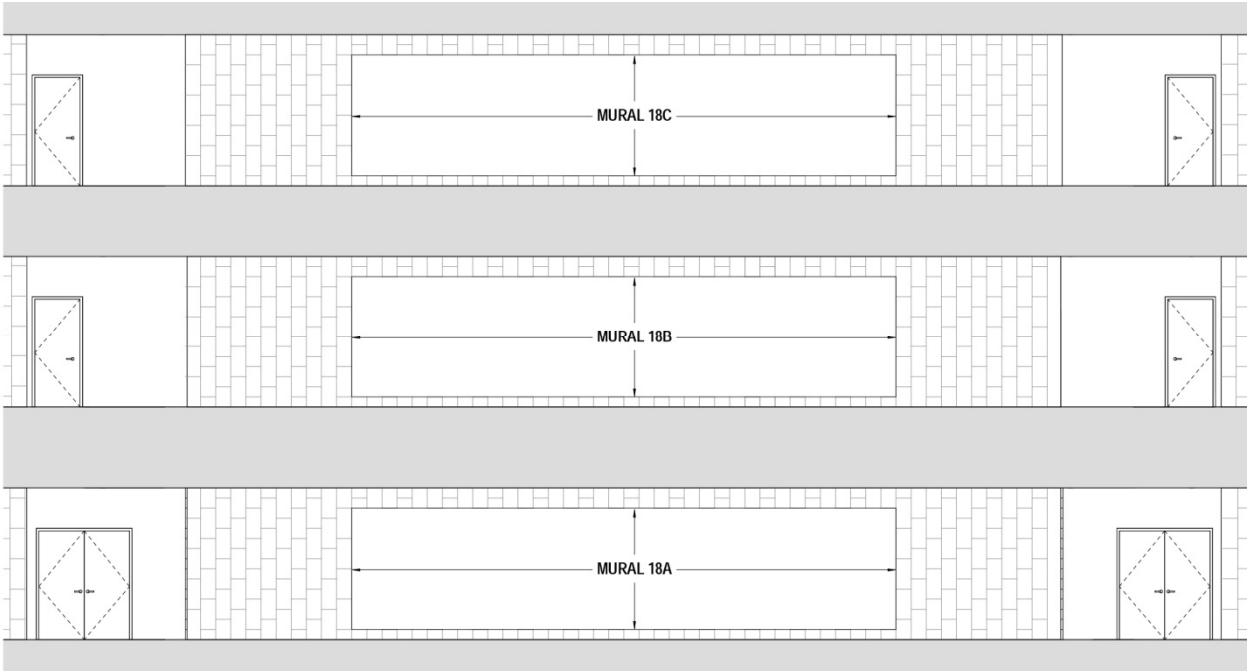
**Mural #19 – STAY Academy Lounge – 1<sup>st</sup> Floor, Area B**



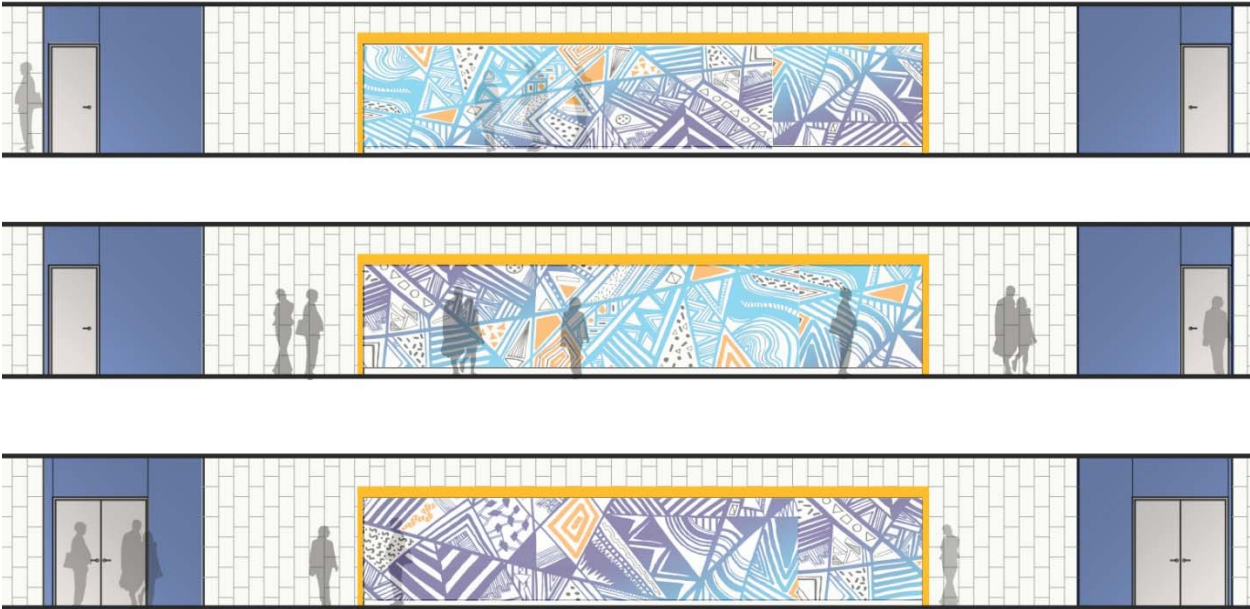
Environmental Conditions	Indoor – temperature range 66-76
Theme	<p>“Ballou STAY Academy Pride”</p> <p>The primary colors for this mural must be Blue and Gold (pantone colors will be made available), and the motto “It’s never too late to earn your high school diploma” must be incorporated into the mural. The mural should include a racially diverse group of individuals engaging in some of the following skills: Cosmetology, Barbering, Auto Technology, Culinary Arts, Computer, Chemistry, Internet Technologies, Match, Art, Reading, Foreign Language, Community Service</p>
Construction limitations	<p>Finished gypsum wall board will be provided. Painting, mixed media, mosaic tile, tapestry or digital techniques with a film application such as vinyl are all accepted.</p>
Depth	Must be less than 1”
Art style	
Dimensions	20’ W x 10’ H
Budget	\$7,500

# Performing Arts Mural

**Artist #5** will be responsible for Murals #18A, #18B, #18C



Blank canvas

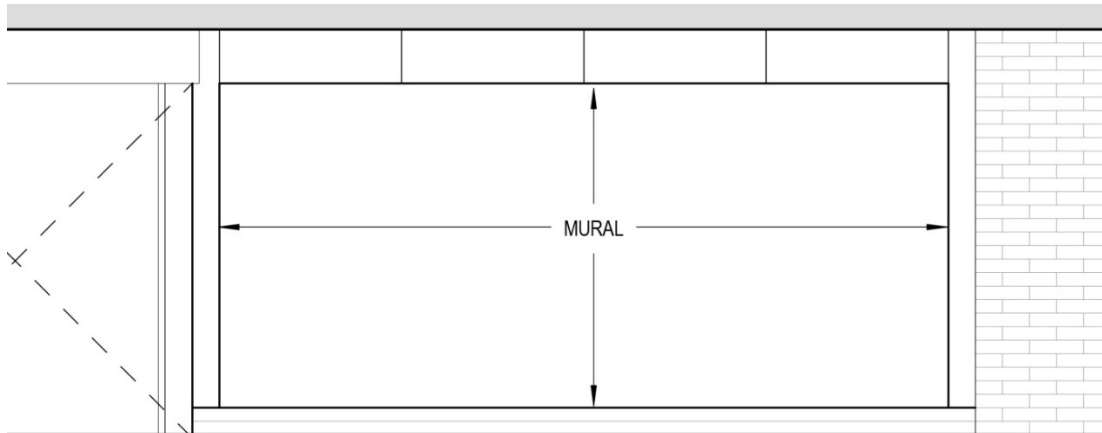


Sample image of mural across three floors

Environmental Conditions	Indoor – temperature range 66-76
Theme	Performing Arts – Stretching across multiple floors, this very large mural is dedicated to Dance (Ballet, African, tango, electric slide, breakdancing), Musical performance, Spoken Word, Theatre, Actors, Comedians, Dancers, Magicians, Singers, Costumes, Stage makeup, performance art. These murals will be seen from the exterior courtyard through a glass wall and should read as one combined mural across multiple floors. They should be connected, yet compositionally complete on their own individually.
Construction limitations	Finished gypsum wall board will be provided. Painting, mixed media, mosaic tile, tapestry or digital techniques with a film application such as vinyl are all accepted.
Depth	Must be less than 1”
Art style	
Dimensions	Approximately 30’W x 8’H for each of the 3 floors
Budget	\$36,000 for all three

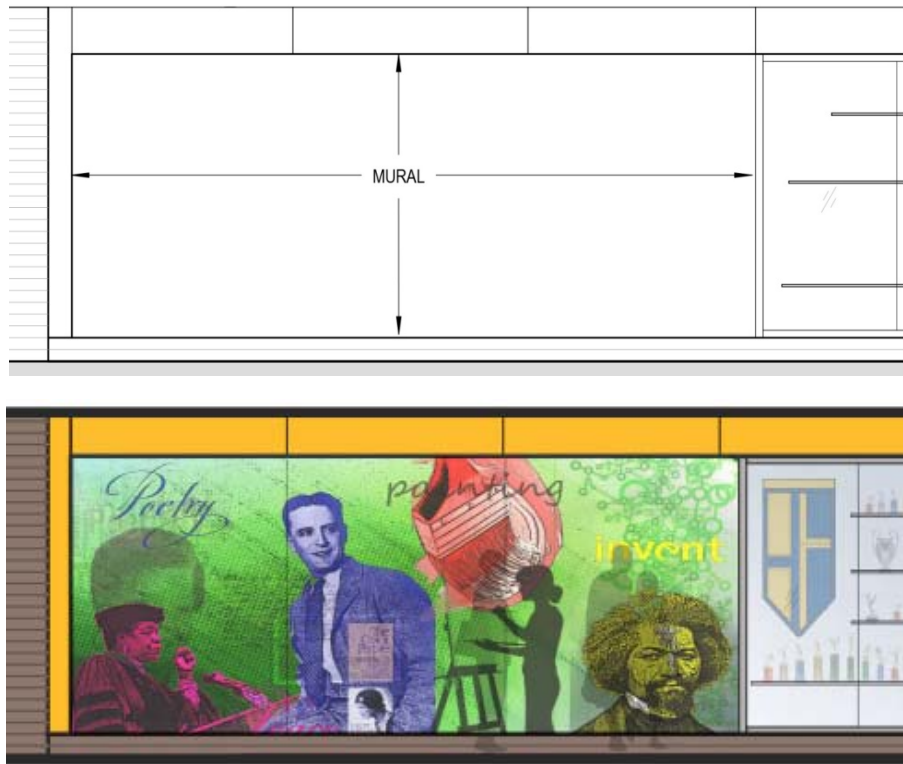
**Artist #6** will be responsible for Murals #20, #21, #22

**Mural #20 – Main Street / Cafeteria, Second Floor, Area E**



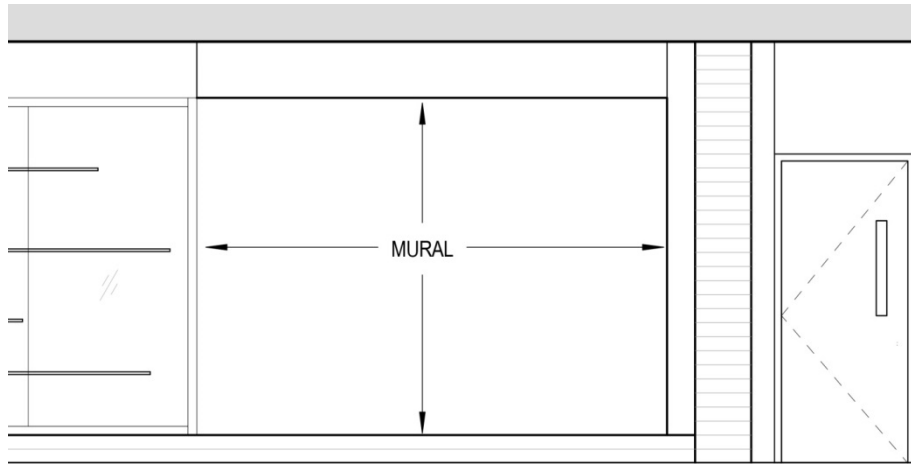
Environmental Conditions	Indoor – temperature range 66-76
Theme	“Healthy Eating, Healthy living” Located at the entrance to the kitchen / servery and in full view of the cafeteria, this mural is dedicated to eating smart. It should be a vibrant and colorful two dimensional composition of Fruit, Vegetables, whole grains and healthy proteins
Construction limitations	Finished gypsum wall board will be provided. Painting, mixed media, mosaic tile, tapestry or digital techniques with a film application such as vinyl are all accepted.
Depth	Must be less than 1”
Art style	
Dimensions	18’W x 8’H
Budget	\$7,500

## Mural #21 – Main Street at Media Center – 3<sup>rd</sup> Floor, Area E



Environmental Conditions	Indoor – temperature range 66-76
Theme	<p>“21<sup>st</sup> Century Learning”</p> <p>This mural is located outside of the Library / Media Center. This mural is themed around Critical Thinking, Communication, Collaboration and should also represent some activities that take place in the media center such as chess club, poetry readings, yearbook, National Honor Society, Bible Club, Sign Language club, etc.. The art of this mural may incorporate quotes that are thematically connected to the content.</p>
Construction limitations	Finished gypsum wall board will be provided. Painting, mixed media, mosaic tile, tapestry or digital techniques with a film application such as vinyl are all accepted.
Depth	Must be less than 1”
Art style	
Dimensions	19’4” W x 8’ H
Budget	\$7,500

## Mural #22 – Main Street Band / Choir Room – 2<sup>nd</sup> Floor, Area F



Environmental Conditions	Indoor – temperature range 66-76
Theme	“The Power of Music” Adjacent to the Band and choir rooms, this mural is dedicated to the human voice and the award winning Ballou Majestic Marching Knights
Construction limitations	Finished gypsum wall board will be provided. Painting, mixed media, mosaic tile, tapestry or digital techniques with a film application such as vinyl are all accepted.
Depth	Must be less than 1”
Art style	Abstract
Dimensions	11’2” W x 8’ H
Budget	\$7,500



**Graphic Designer / Artist #7** will be responsible for Mural #23

**Mural #23 – Natatorium and STAY Academy Entrance – 1st / 2<sup>nd</sup> Floors, Area B/C**



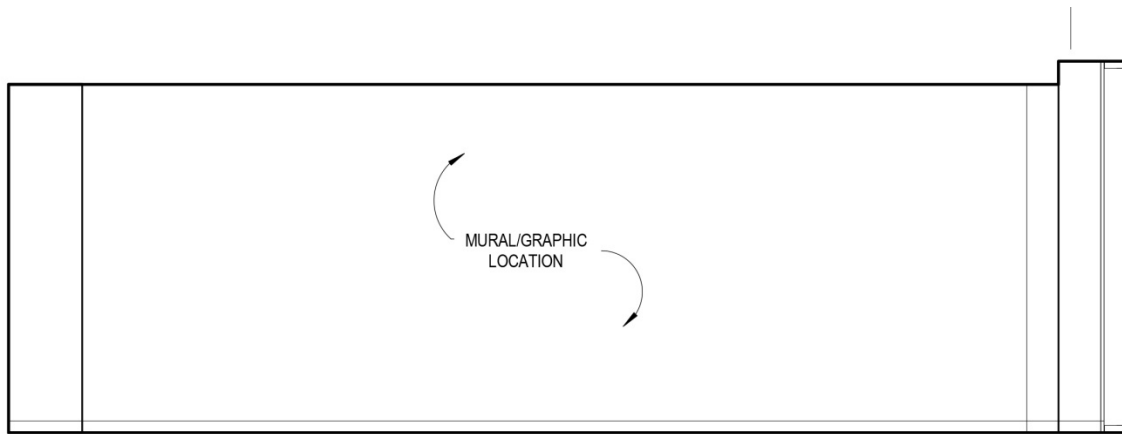
Mural #23 Sample images

Environmental Conditions	Indoor – temperature range 66-76
Theme	Abstract representation of Vocational Arts - Cosmetology, Barbering, Auto Technology, Culinary Arts in addition to Aquatics to be designed as a partially opaque, partially transparent film or self-adhesive vinyl to be placed on the glass of the entry. Two samples are provided above to give an understanding of what the intention is.
Construction limitations	Tempered Glass is the surface that will receive this art. Portions of glass will be exposed to glass for prolonged periods of time. Continuous hole patterns perforated into films are acceptable. Graphic will be installed on the Atrium side of the glass and must be seen through from the inside. Scaffolding may be required to install film on glass. All installation costs are included in the budget below. Graphics may be installed on the glass only, not on the aluminum mullion frames which hold the glass.
Depth	Must be less than 1”
Art style	Abstract
Dimensions	South Wall (right side of rendering) approximate: 26’10”W x 25’4” H East Wall (far side of rendering) approximate: 1 <sup>st</sup> Floor: 20’10”W x 11’4” H 2 <sup>nd</sup> Floor: 20’10”W x 10’ H
Budget	\$30,000



**Artist #8** will be responsible for Mural #24

**Mural #24 – Arts & Tech Academy Student Lounge North Wall – Third Floor, Area A**

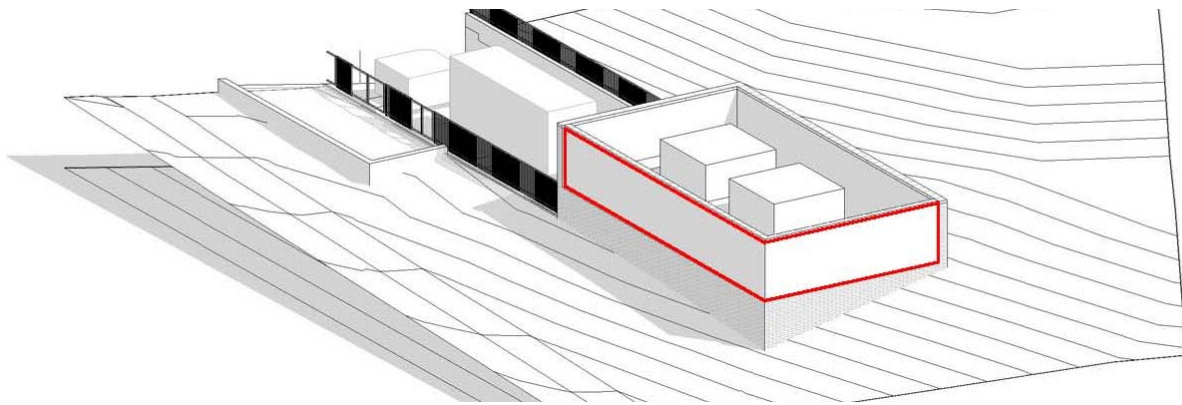


Environmental Conditions	Indoor – temperature range 66-76
Theme	<p>“The Power of Peace”</p> <p>A mural to be located in the Student Lounge for students with Special Needs and should represent calmness, peacefulness and meditation in its composition and it’s use of color. This mural should be inviting and should be instrumental in neutralizing disruptive behavior. The art of this mural should incorporate quotes that are thematically connected to the content.</p>
Construction limitations	<p>Finished gypsum wall board will be provided. Painting, mixed media, mosaic tile, tapestry or digital techniques with a film application such as vinyl are all accepted.</p>
Depth	Must be less than 1”
Art style	
Dimensions	27’ W x 9’8” H
Budget	\$8,000

**Mural 25 is deleted from the project.**

**Artist #9 will complete Mural #26**

**Mural #26 – Exterior Mosaic Mural on Cooling Tower**



Environmental Conditions	Exterior – must withstand extreme cold and extreme heat. Temperature range -10 to 110 degrees Fahrenheit. Must be installed to withstand vibration from nearby cooling tower.
Theme	“Power of Ward 8” Located on 4 <sup>th</sup> street, SE, mural will wrap the cooling tower in mosaic, paint, or metal panels. This very large mural should be a colorful abstract expression of mosaic tiles that speaks to the soul of Ward 8 residents
Construction / Structural limitations	Capable of withstanding 15 pounds per square foot (PSF) over the mural area. There are concerns with the quantity and location of anchorages back to the concrete in an artwork installation of this scale at this location. The artist will be expected to work collaboratively with the Design and Construction teams to execute this piece of art. The PSF values may be exceeded with further structural review of exact loading locations.
Depth	Must be less than 6”
Art style	
Dimensions	52’ - 8” x 9’ - 0” and 28’ - 0” x 9’ - 0”
Budget	\$120,000

**Artist #10** will be responsible for Sculpture #1 in the interior courtyard of the building.



Environmental Conditions	Exterior – must withstand extreme cold and extreme heat. Temperature range -10 to 110 degrees. Must be installed to withstand vibration from nearby cooling tower.
Theme	Large sculpture – should serve as an iconic meeting place on the interior of the building. Themed around the school mascot of the “knights”.
Structural limitations	The artist will be expected to work closely with the Design/Build team to ensure an appropriate base is provided that accommodates the design of the sculpture.
Spatial limitations	Must fit into a diameter of 8 feet in width, height limitation is 25 feet.
Art style	
Dimensions	TBD
Budget	\$110,000

## General Notes:

1. Art, digital files, stencils, etc will become the property of DCPS.
2. Art may only be installed at this location. Additional fees may be provided to the artist in the event the art is used for other purposes.
3. Art must be durable OR easily replaceable / replicable (such as digital art printed on vinyl). ALL art has the potential to be damaged in this environment and must anticipate and resist behavior found in a typical high school.
4. In most cases, the finish surface provided will be painted gypsum board.
5. Due to the scale of most works, it is anticipated that all art will be created offsite and installed on the premises in individual panels. Artist may determine what the final medium is. Questions on weight and structural limitations must be presented prior to commencement of the artwork.
6. All material, mounting and installation costs are included in the budget for each individual piece of art.
7. Art must have operational resiliency and provide no additional maintenance costs by DCPS as a result of its installation.
8. Art must be made of non combustible materials.